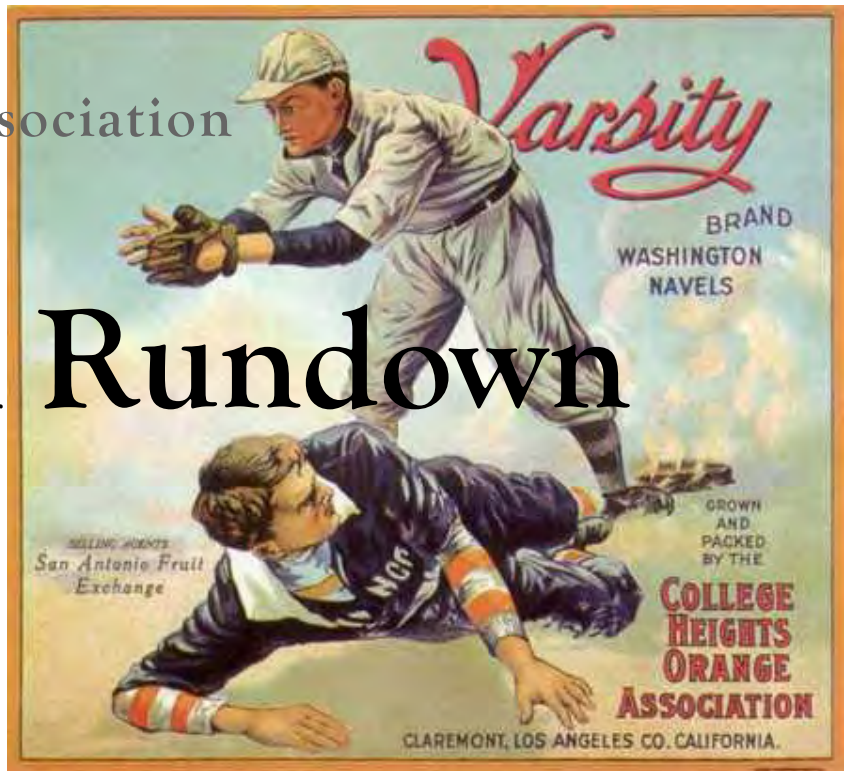


Rochester Softball Association
Spring 2002

The RSA Rundown

Inside this issue:

RSA Directors	2
Tournament Info	3
Sanction Summary	3
ASA News	4
Capital Improvements	5
2001 League Champs	6
Hall of Fame	7-8
National Tourney News	9
Softball History	10
What is the RSA	11
Important Dates	12



<http://www.onlinerochester.com/rsa>



Words from Our President.....

Softball Players and Fans,

It is now time for another softball season. We hope you are looking forward to another fun filled year of softball.

The Rochester Softball Association (RSA) is committed to make Rochester Softball as enjoyable as it possible can. And with that in mind, we will continue to look ahead on what we can do to make softball fun, fair and competitive with great facilities.

I'm happy to announce that last year; we supplied fields #3, #4 and #5 with brand-new scoreboards. We would sincerely like to again thank Coke and Bud for their financial assistance in sponsoring this project. And, the RSA is not done yet! This year,

we will be putting two more brand new score boards on fields #6 and #7 just like the one's on #3, #4 and #5. The RSA is committed "not" to forget the fields down by the woods.

The covered dugouts were a positive hit according to your replies during RSA's Appreciation week. In addition to putting up two more scoreboards, the RSA is committed this year to improve the landscaping and or planting more trees at McQuillan. We would like to add more trees between fields #3-#4 for sure to provide more shade for future years ahead. We feel that we want to give each field its identity as well. In addition, a major project that we would really like to get accomplished is to improve the lighting on the fields. We will work closely

with the Rochester Park and Recreation department to get this accomplished.

Finally, I would like to thank all that serve on the RSA Board. There are countless volunteer hours put in to help make softball what it is in Rochester. In addition, I would also like to especially thank Mr. Roy Sutherland, Mr. Steve Browning and Mr. Steve Lawson, all from the Park and Rec department. With out their assistance, we could not achieve the things we want to for you the players, teams and fans. And treat our umpires with the respect and dignity they deserve. Have a great season but most of all....HAVE FUN!

Sincerely,
Brad Trahan

RSA Officers and Board of Directors for 2001-2002

Co-President A: Brad Trahan, 286-7840-btandjt@msn.com

Co-President B: Nate Bell, 252-5073-nathan_bell@prodigy.net

Treasurer: Terry Schmitt, 280-5898-tschmitt68@worldnet.att.net

Secretary: Becky Macken, 289-3814-beckymacken@hotmail.com

Women's Representatives:

Vicki Jo Thiesse, 269-2602: girljock62_vj@yahoo.com

Maria Irish, 289-7517: jeffmaria@aol.com

Jan Capelle, 287-9750: capelle25@aol.com

Men's Joe Jennison, 288-8299

Mike Macken, 289-3814

Shawn Bishop, 775-6898: bishop.shawon@mayo.edu

Umpire Representatives:

Walt Borland, 365-8992: wlboland429@aol.com

Co-Rec Representatives:

Tom Keller, 367-2464: tfk03@msn.com

Tom Conway

Jill Reiter, 282-0956: jillreiter@chartermi.net

Fast Pitch Representatives:

At-Large Representatives:

Bob Adams: greengiantadams@aol.com

Daren Walk: dnawalk@charter.net

LEGAL BATS!!!!

For a complete listing of legal bats for ASA-USA-MSF play, see the ASA web site at www.softball.org.



View from behind the plate.....

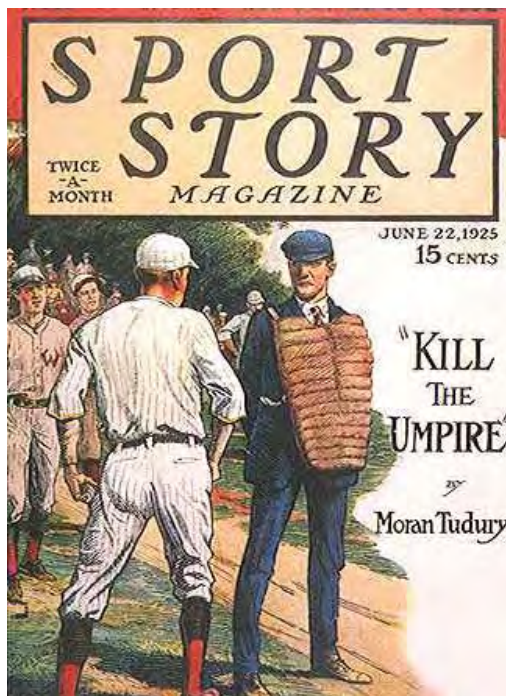
Of all the thankless jobs on earth, whenever duty calls;
The worst is they who must decide between the strikes and balls.

Who always has to say at once if it is foul or fair;
When some determined player hit's the softball in the air?

The person whose eyes must rove the field and cover every base;
And figure if the defense or the runner won the race.

We are the softball umpires who must be prepared to talk;
When there is an argument about a run or walk.

But wheater crowds stand up and cheer, or politely boo and shout;
We are the ones the softball world can never be without.



Post Season Tournament Dates for 2002

Make sure to submit your entry fee to Park and Rec. by June 22, 2002. Fee is \$115-130, made payable to MSF.

District Dates:

- August 9-11: C Men's Slow- Faribault
- August 16-18: D Men's Slow- Winona

State Tournament Dates:

- July 27-28: A & B Co-Rec. Slow – St. Joseph
- July 28: Women's Masters (30) Slow- St. Joseph
- August 2-4: A & BB Men's/A Women's Slow – Faribault
- BB & B Women's Slow – St. Cloud
- D Men's Fast/Men's (40) Fast- Redwood Falls
- August 9-11: B Men's Slow – Inver Grove Heights
- C Women's Slow – Monticello
- CC/DD Women's Slow – Richfield
- D Women's Slow – Moorhead
- BB/B Men's Fast – Mankato
- C Men's Fast – Austin

- August 16-18: CC Men's Slow – Hutchinson
- C Men's Slow – Coon Rapids
- August 23-25: DD Men's Slow – Owatonna
- D Men's Slow – Elk River
- E Men's Slow – Detroit Lakes
- C Co-Rec. – Hastings
- D Co-Rec. – Fosston

Regional:

- August 17-18: Men's Fast Pitch- Sioux Falls



ASA National Tournaments for 2002

Women's Slow Pitch:

- Masters: Aug. 16-18 @ South Bend, IN
- A: Aug. 15-18 @ Tifton, GA
- B: (West) Sept. 20-22 @ Chandler, AZ
- C: (West) Sept. 20-22 @ TBA
- D: (West) Sept 20-22 @ Tukwila, WA

Men's Slow Pitch:

- A: (West) Sept. 19-22 @ Waterloo, IA
- B: (West) Sept. 19-22 @ McAllen, TX
- C: (West) Sept. 19-22 @ Las Cruces, NM
- D: (West) Sept 19-22 @ Plano, TX

Co- Rec. Slow Pitch:

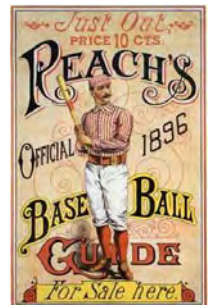
- Major: Sept. 13-15 @ Dothan, AL
- A: Aug. 22-25 @ Lakeland, FL

Men's Fast Pitch:

- A: Aug 29-Sept. 2 @ Lancaster, CA
- B: Aug 28-Sept. 2 @ Byran College Station, TX
- C: Aug 28-Sept. 2 @ Sacramento, CA

Sanction Summary of Rochester Softball Leagues 2001

Men's A: 1	Co-Rec B: 8	Women's A: 2	Fast-Pitch:
Men's B: 7	Co-Rec C: 46	Women's B: 6	B: 2
Men's C: 75	<u>Co-Rec D: 6</u>	Women's C: 11	<u>C: 8</u>
<u>Men's D: 38</u>	Total Co-Rec:	<u>Women's D: 15</u>	Total Fast Pitch: 10
Total Men's: 121	60		



ASA Quick Facts

- The Amateur Softball Association was founded in 1933 by Leo Fisher and Michael J. Pauley.
- The ASA was named the National Governing Body of Softball in the United States by the United States Olympic Committee in 1978.
- The ASA's National Office is located in Oklahoma City.
- The ASA has 93 local state/metro associations that register teams and organize leagues around the country.
- The Amateur Softball Association registers over 245,000 softball teams comprising over 3.5 million players.
- The ASA annually registers over 83,000 youth girls' fast pitch softball teams comprising over 1.2 million girls.
- The ASA annually registers over 43,000 certified umpires
- The ASA conducts over 90 National Championships on an annual basis in which 30,000 players compete
- The ASA's website, www.softball.org, averages over 4,000 "unique visitors" per day.
- The ASA Hall of Fame Stadium in Oklahoma City has served as host of the NCAA Women's College World Series more than any other site.

Softball is a way of life for thousands of people each year, and their choice for softball is the Amateur Softball Association, the national governing body of softball in the United States.

Not every team can come home with a national championship, but the ASA softball program gives people an opportunity to have clean, competitive

fun playing slow pitch, fast pitch or modified pitch, at levels ranging from district to national championship.

Since its founding in 1933, the Amateur Softball Association has given the sport direction and strived to have the best program possible for the millions of people who play amateur softball each summer. Many of them started playing in the ASA's Junior Olympic program before moving up to the adult divisions of play.

ASA has kept its hand on the pulse of the softball community in America and, when needed, has added divisions of championship play to meet the interests of those involved in the ASA program.

Today, ASA has more than 90 national championships, ranging from 10-under fast pitch to 75-over slow pitch. Annually more than 40,000 players participate in ASA National Championship Finals and they are assured of playing some of the best teams in America.

The tournaments they participate in are run by well-qualified tournament staffs who care about the players participating in their national tournament and want them to enjoy playing in an ASA adult national championship.

Jess Maxey of Yukon, OK, had this to say a few years ago after his team played in an ASA national championship.

"We played in a lot of tournaments and won most of them, even so-called world

tournaments, but it wasn't until we got to the ASA nationals that we realized we had distinguished ourselves by earning a spot among the best. It was exciting to compete against some of the legendary teams in the sport and realize that they had also earned the right to be there. There is nothing like an ASA national. It's a tournament that means something and it creates memories that will stay with you for a lifetime."



Summary of Major Capital Improvement Projects And Sanction Fees

<i>Year</i>	<i>Project</i>	<i>Amount</i>
1992	Team Sanction Fees	\$3,948
1993	McQuillan Parking Lot	\$20,000
	Team Sanction Fees	\$3,756
1994	Dugouts	\$7,175
	Team Sanction Fees	\$3,636
1995	Concession Stand	\$115,502
	Team Sanction Fees	\$3,096
1996	Team Sanction Fees	\$3,080
1997	Team Sanction Fees	\$2,812
1998	Team Sanction Fees	\$3,408
	Joxx Box	\$8,059
1999	Team Sanction Fees	\$3,274
	Security Lights	\$9,600
	Foul Fence Repairs	\$2,391
2000	Team Sanction Fees	\$3,445
	Dugout Roofs	\$12,188
2001	Team Sanction Fees	\$3,425
	Scoreboards	\$2,900
	Security Lights	\$1,500
Total Amount:		\$213,195

TOTAL PROJECTED REVENUE TO THE CITY OF ROCHESTER THROUGH
2001 FOR TOURNAMENTS: \$1,571,500

Teams with Classification Changes for 2002

Men's: CC to B
Andy's/Miller Lite
Jonny's Saloon

Women's: B to BB
Bertschringer Masonry

Co-Rec.: B to A
Bigelow Enterprises

Fast Pitch: C to B
Harley Davidson



Class of 2001 National Tournament Participants

- A Women's Slow Pitch:
**Macken/Budweiser
Mr. Pizza**
- Women's Slow Pitch:
Bertschringer Masonry
- B Men's Slow Pitch:
**Jonny's Saloon's/
Eyota Merchants**
- Major Co-Rec. Slow Pitch:
Jonny's Saloon
- A Co-Rec. Slow Pitch:
Bigelow Enterprises
- Men's Fast Pitch
Gamblers

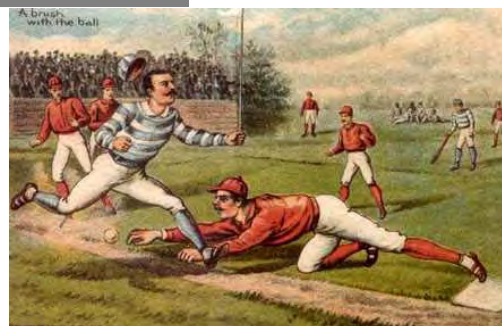
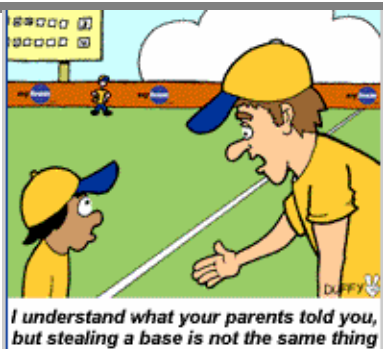
MEN'S CENTENNIAL	Macken Plumbing
MEN'S AMERICAN	Mike Meyer Sign Painting
MEN'S MIDWEST	Those Guys/McMurphy's
MEN'S EASTERN	(Tie) Brothers Larson Siding
MEN'S NORTHWEST	B.O.S.S.
MEN'S SOUTHEAST	Shar's Country Palace
MEN'S VIKING	(Tie) Sherwin Williams Schmidt Goodman
MEN'S CHEROKEE	(Tie) Kemp's Tenacious D Tom's Kadlec Pontiac
MEN'S PACIFIC	Superior Contractors
MEN'S CHEYENNE I	Septic Snakes
MEN'S CHEYENNE II	D.D.T. Nailers
MEN'S SUBURBAN	Rayders
MEN'S MOHAWK	(Tie) Adamsons Motors/Dean Mack Donavon Construction
MEN'S FAST PITCH	Gamblers
WOMEN'S CENTENNIAL	Macken/Budweiser
WOMEN'S AMERICAN	Valentino's
WOMEN'S HIAWATHA	Culver's
WOMEN'S SOUTHERN	North Star
CO-ED CENTENNIAL	Bigelow Enterprises
CO-ED EASTERN	McMurphy's
CO-ED NORTHWEST	Shar's Country Palace
CO-ED VIKING	(Tie) Home Federal Remax
CO-ED EASTERN (m)	Canadian Honkers
CO-ED NORTHWEST (m)	(Tie) Hugh Jass Rochester Striping & Sweep
CO-ED SOUTHEAST (m)	(Tie) Misfits McMurphy's/Aquarius Irradiators

USSSA SANCTIONING

If you want to sanction your team to play in USSSA tournaments and post-season play, contact Steve Browning, Director of Softball at Park and Rec; 281-6160.

Softball Facts!!!

- In 2000 over 2.3 million people played slow pitch..
- Coed is the fastest growing with over 35,000 sanctioned teams.
- In women's divisions, slow pitch dominates with over 225,000 players competing in 2000.
- Only 2% of registered women's teams compete in post season.
- Largest segment in ASA is men's slow pitch with over 100,000 teams (1.5 million) playing in 2000.



Cy Yess and Les Ernster Inducted into the Minnesota Softball Hall of Fame

Cy Yess and Les Ernster were two of the most dominant figures Rochester recreation softball has ever seen.

Yess, now 52, became prominent in a number of ways through softball. She was a player, a coach, an umpire, and performed key roles in a variety of Rochester softball associations, helping promote and advance the sport.

Ernster, 55, earned his softball reputation strictly as a player. And what a player he was. The former shortstop was three times all-state and twice all-region.

On Oct. 19 in a ceremony in Brooklyn Park, Minn., the two Rochester residents were recognized for their softball accomplishments as they were inducted into the Minnesota Softball Hall of Fame.

Cy Yess

Yess taught plenty of lessons in her 30-some years in softball. She learned some, too.

One of the best came in the early 1970s as she was coaching a Rochester fourth-grade girls team. It was the bottom half of the final inning, her team trailed by a run and was down to its last out. The team needed to win in order to reach the playoffs.

Up stepped to bat the tiniest player on Yess' team, a girl so small she could barely get the bat off her shoulder. Now, she was being asked to come through in order to keep her team's season alive.

Yess called timeout, figuring she should offer some sort of special instruction, though she didn't know what. The girl and Yess met halfway up the baseline.

Turned out it was the girl who did the talking.

"She just looked up at me, with these big dark eyes, and said, 'I'll do the best I can,'" Yess said. "Then she swung as hard as she could, the ball hit the bat and landed between third base and the pitcher. She had a hit and won the game. It was a fairy-tale ending and that little girl's moment in time."

It was a heck of a moment for Yess, as well. She has been living by that "best-I-can" advice ever since. Her best, which has included donating endless hours to Rochester softball programs as a player, coach and league organizer, was recognized in October when she had her own fairy-tale ending. Being inducted into the Minnesota Softball Hall of Fame was a dream come true.

"It still feels like a dream to me," said Yess, whose Hall of Fame plaque is resting prominently on her fireplace mantel. "You see the people who have been inducted ahead of you (in the 20 years of the softball



Les Ernster and Cy Yess pose after being inducted in the Minnesota Softball Hall of Fame, in Brooklyn Center in October

Hall of Fame), people that you considered your heroes, and it's just amazing to now be one of them."

Yess knew sports would be a major part of her life since she was a little girl, growing up in Waseca. It started with her extended family having a picnic each July. Everyone would bring a dish of food to pass around. It was also a staple for all comers to bring softball bats and gloves.

Yess was in her glory those days. Though there weren't ample opportunities for girls growing up in the 1960s to play sports, Yess' appetite had been wet for athletics as a little girl. So she made sure she found ways to participate.

As a senior in high school, she tried to pave the way for herself and other athletically-minded girls by petitioning the state to pass Title 9 legislation for girls sports.

At Wartburg College in Waverly, Iowa, Yess starred on the women's softball and basketball teams. And that wasn't nearly the end of her athletic pursuits. After moving to Rochester in the early 1970s, she maintained a softball schedule that included playing, coaching, umpiring and organizing leagues and associations. A highlight came in 1983 when she pitched her Class A team, Manahan & Co., to the state championship.

Yess wouldn't stop playing until 1979, when her knees had given out at the age of 30. From there she went strictly to coaching and organizing softball in Rochester.

That wouldn't stop until 1993 when she retired completely from softball. Well, almost completely.

"When the calls come for additional help (in Rochester

Yess, Ernster, Hall of Fame.....

softball), I'm available," Yess said.

Les Ernster

There was a time when the softball field seemed more like a living room to Les Ernster.

He made himself right at home between the lines. That's what happens when you play the game six days a week, and do it with the kind of comfort level and confidence Ernster did it.

Ernster, now the principal at Longfellow School in Rochester, toggled between a pair of softball homes in intense playing days that started in college and lasted until he was 36. That's when it was time to hang it up.

"My body starting wearing out and I couldn't do the things I used to do," he said.

For a while, by far Ernster's favorite pastime was playing a quick and nimble shortstop and using his 5-foot-10, 180-pound body to hit teams to death with his lethal bat. Ernster figures he played over 100 games a summer and did it in a pair of towns, Rochester and Winona. Some of the time it was fastpitch, some of the time slowpitch.

"I played so much because I loved it," Ernster said. "If there had been more days in the week, I'd have played more softball. Every week it was two nights of fastpitch, two nights of slowpitch, and then tournaments on Saturdays and Sundays."

Ernster got his start with bats and balls while growing up in Dyersville, Iowa. He was something of a child prodigy in baseball, already pitching at the age of 8 against Little League players four years older than him.

"I was pretty young to be holding my own against those kids," Ernster said. "But I begged to pitch against them."

Ernster moved to Spring Valley the middle of his junior year, then later attended college at Winona State University. It was at WSU that his softball playing days began in earnest. It was fastpitch

softball, four days a week.

A short time later, with Lantern Lounge and Jim & Joe's softball teams, Ernster really began to make a name for himself in the sport. That was partly because Ernster was at his best with these teams, and partly because his teams were dominant.

Ernster, who along with second baseman Dave Dostal combined to make a wicked double-play combination for these teams, also was nasty with the bat. He routinely hovered around .500 from the plate. But he also had some pop in his bat.

Which brings to mind a moment he cherishes to this day. His team was playing in the region tournament when he was floored and inspired by an act by the opposing pitcher. Two of his teammates were on base when it happened. The opposing pitcher walked the next batter to get to Ernster, apparently losing track that Ernster was a three-time all-state softball player.

"I couldn't believe they were walking him to get to me," Ernster said. "It was almost an insult."

Ernster had an appropriate response. He delivered the first pitch offered to him out of the park. It was the kind of moment that Hall of

The RSA Rundown



Les Ernster's acceptance speech.



Members of the RSA celebrate with Hall of Famer Cy Yess.



Cy Yess' acceptance speech.



Les enjoying the celebration.



Pauline Fligge and Cy Yess celebrate.



RSA President Brad Trahan



RSA Rep. Joe Jennison



Hall of Famer, Ray Sibley

Jonny's Saloon/Eyota Merchants Men's Softball team places 7th at National Tournament in Midland Texas

Page 9

The Jonny's Saloon/Eyota Merchants Men's softball team placed 7th out of 55 teams at the ASA Men's West Class "C" National Tournament in Midland, Texas during the weekend of September 21-23.

Sponsored by Jonny's Saloon in Elba, MN, the team compiled a 5-2 record for the tournament. As a Class "C" tournament the home run rule was a maximum of 3 per game with any after three being an out. Starting Friday, Jonny's beat the host team from Midland, Young Bldg. Supply by a score of 9-8. Later that day, they dispatched to the loser's bracket a good team from Kansas City MO, KC Wingnuts beating them 17-14. Saturday morning was delayed for Jonny's until 4:30 p.m. against Shawn Montee Timber Co. from Spokane, WA. Shawn Montee beat Jonny's 11-8 to send them to the loser's bracket and a long Saturday night. Due to the rain delays Saturday morning, the next three games for Jonny's were at 8:00, 11:45 p.m. and 1:00 a.m. Sunday morning. Jonny's won all three games, defeating Skinny's from Abilene, TX 16-15, Chariton Merchants from Chariton, IA 22-14, and EL Conquistador Landsharks from Temple, TX 20-13. After only a few hours of sleep, Jonny's played Team Hara's out of Albany, OR at 8:00 a.m. Sunday morning. Both teams had played until 3:30 am, but Jonny's couldn't get the juices flowing and lost to Hara's 15-2.

The tournament finished up Sunday afternoon with Johnny Blasé from Los Angeles double dipping Iowa Sports Supply from Gilbertville, IA 29-20 and 42-20. BEP/Chinese Torture from Anaheim Hills, CA finished 3rd. Jonny's Saloon placed three players on the all tournament team with Greg Sell (2nd team) and Del Bicknese and Brad Kullot (3rd team). Sell and Bicknese led the team with .696 averages while Sell and Jeff Johnson led the team with 4 homeruns and 15 RBI's each. The complete tournament results and awards can be found at www.softball.org.

Jonny's player would like to give a big thanks to Jon Marshman, owner of Jonny's Saloon for being a great sponsor, in addition they would also like to acknowledge the businesses of Eyota that helped the team be successful. Jonny's Saloon/Eyota Merchants finished 63-29 record including five tournament championships and a second place finished in the Men's Centennial League.

Team members include: Brad Kullot, Neal Greseth, John Franke, Chris Dornack, Corey Dornack, Kevin Kullot, Heath Benike, Jeff Johnson, Warren Renold, Dave Anderson, Jason Voeltz, Tiim Mayer, Greg Sell, Dick Clallane, Brain Fieldseth, Nick Fink, Aaron Gust, Adam Gust, John Johnson and Jason Riess.

ASA and Rochester rules state that "NO PLAYER CAN SMOKE OR CONSUME ALCOHOLIC BEVERAGES WHILE PARTICIPATING IN AN ASA SANCTIONED GAME. This means no drinking or smoking period. Violation of these rules means immediate expulsion and possible suspension from further games. See an Umpire or speak to and RSA Representative if you have any questions.

Bigelow Enterprises Co-Rec Wins Class B State Championship

Bigelow went undefeated in state (5-0), with Greg Bangs being named the MVP of the tournament. Overall, the team hit extremely well and answered every time an opponent jumped out to a lead. Bigelow attended their first ever national tournament in September. Team members include: Jim Jorgenson, Manager, Greg Bangs, Phil Knoll, Rod Johnson, Craig Klor, Kelly Holecek, Chris Johnson, Krista Peterson, Missy Dolosa, Kari Urban, Bobbi Jorgenson, Jay Johnson. The team has played together for 6 years and boasted a 28-2 season record. In addition, they were the Rochester Centennial League Champions.

It's somewhat ironic that softball, a sport that motivates millions of people to run outside and play during the summer, was derived during the winter and was first played indoors.

Although the origin of the sport can be traced back to an impromptu game played in 1887, it didn't really evolve into what we now know as softball until a few years later.

The initial game that set the sport in motion occurred with the Farragut Board Club of Chicago and, supposedly, was brought about by several giddy football fans awaiting the result of The Game between Harvard and Yale.

When the announcement was made that Yale had prevailed, one Yale supporter picked up a boxing glove and tossed it at a Harvard fan. Not wanting to be hit by the airborne object, the Harvard fan swatted at the glove with a stick. That action of frivolity prompted George Hancock, a reporter for the Chicago Board of Trade, to suggest a game of baseball which, due to the weather, would have to be played indoors.

The club's gym was turned into a playing area, using a chalk outline for home plate, the base paths and pitcher's area; and a tied up boxing glove for a ball. After splitting up into two squads, the teams played out to a 41-40 score. Due to the venue, the game was called "indoor baseball" and soon the Farragut gang was promoting the sport and challenging other clubs.

Hancock penned 19 rules for his game, which was played outside in the spring and then took on the name 'indoor-outdoor,' and the set of rules was officially adopted in 1889 by the Mid Winter Indoor Baseball League of Chicago. The game flourished in the Chicago area, and eventually its popularity spread, with its next big advancement taking place in Minnesota.

Louis Rober, a lieutenant in the Minneapolis Fire Department, Company No. 11, wanted to find an activity that would not only keep his firemen busy, but also keep them in shape.

Taking a vacant lot next to the firehouse, Rober modified the rules of baseball, in order for the game to work on his smaller playing field. He cut the base distance in half and made the pitching distance 35 feet. For equipment, he used a miniature medicine ball and a bat two-inched in diameter. The game proved popular for Company 11, and soon other fire companies were taking up the sport.

Rober later transferred to another station and started another team, dubbed the Kittens, and, by 1900 had formed leagues. The name 'kitten ball' was tagged to the sport, compliments of Minneapolis Fire Department Captain George Kehoe, who coined the term in order to honor Rober as the game's founder.

With the basic foundation of the modern game established with Rober's efforts, the next big break for the game came during the 1910's.

In 1913, the Minneapolis Park Board adopted the game of kitten ball, and, a few years later, turned to its assistant director of recreation, Harold A. Johnson, to develop a similar game that the Park Board felt could be played and enjoyed by everyone.

Johnson studied the rules of baseball, kitten ball and indoor baseball before he returned with what he called 'diamond ball,' and the game was started by the Park Board in 1916. Within a few years, more than 800 teams were competing, and the game spread past the Minneapolis and St. Paul areas into the surrounding cities of Wisconsin, North Dakota, South Dakota and Iowa.

The term 'softball' didn't surface until 1926, when, during a meeting of the National Recreation Congress, Walter Hakanson, of the Denver YMCA, made the suggestion. The new moniker didn't readily take until the Amateur Softball Association of America (ASA) was established by Leo Fischer and Michael J. Pauley in 1933.

With a national governing body finally in place, the term 'softball' became globally popular, as did the game.

The Rochester Softball Association formed in 1992. The purpose of this organization is to promote, perfect, and foster community recreational softball, to present a healthful and wholesome pastime to all interested participants, and to uphold the principles of sportsmanship and fair play. The objective of the RSA include:

1. To obtain funding for developing and improving softball facilities;
2. To assist Rochester's Department of Park and Recreation identify and prioritize facility funding needs and to provide funding for the same;
3. To maintain an improve communication among members with Rochester's Department of Park an Recreations; and
4. To enhance the image of softball participants.

The officers and Board of Directors are elected at the annual membership meeting an serve on a voluntary basis. This year elections will be held for the office of Treasurer and for Women's, Coed, and At-Large Representatives. The RSA welcomes your ideas, suggestions, or comments. If you would like to attend a monthly RSA board meeting or serve as an RSA representative, please contact your representative for meeting time and location.

2002 Breakdown of your League Entry Fees

➤ Umpires	\$130
➤ Field Maintenance/Mowing/Equip.	\$120
➤ Softballs	\$32
➤ Park & Rec. Administration	\$18
➤ Utilities-Lights/Water/Sewer	\$15
➤ Paper/Printing/Postage/City Line	\$9
➤ Field Supervisor	\$9
➤ Garbage Removal	\$8
➤ Trophies	\$5
➤ Umpire-in-Chief	\$4
	\$350



A few things to remember about our softball complex.....

Every year, it seems as if there becomes a increasing amount of trash that accumulates with the confines of McQuillan Softball Complex. **The RSA is asking that everyone make a conscious effort to pick up your own trash** that is acquired while having a burger and a beer after your games. In addition, please refrain from

bringing glass bottles in the complex, as in most cases they are dug out of the trash by amusing individuals and smashed on the pavement. We all know what that does to barefeet, especially those of children.

Last year several parking tickets were issued to cars

parked in the **no parking zone near the entrance of the park**. This will be strictly enforced again this year as it is imperative that emergency vehicles have ample room to enter the complex. These areas are clearly posted, so don't get caught paying a costly fine.

Hey Gang,

It's softball time again! That umpire grumbling, beer guzzling time. Time to get the gloves and bats out of winter storage!

I am still looking to fill up the work schedule for the concession stand. Last year, the average take home commission was around \$425.00!

The lineup in the stand will be about the same as last year; with the exception of chicken sandwiches. This year we will be selling Coke products in a bottle. This seemed to go over very well last year. The beer will be Bud, Bud Light, and Mich Golden Light. The price is \$2.00 for a 16 oz. cup or 6 for \$10.00. A very close eye again will be put on selling beer to under age drinkers. Remember, 21 means 21. Violators will be prosecuted. PLEASE, if you have any doubts about age, check ID's.

I'm hoping to get a good turn out this year, and I've eliminated teams from the responsibility of inventory. I will do this. The responsibilities of the teams are 1) keep track of the money, 2) have enough people each night to cover the stand and 3) make sure the stand is clean and restocked for the next day.

Again, I am requesting that only people 16 or older work in the stand. Please keep the back door locked at all times, (there is a toilet and sink now installed in the back room of the stand), and keep a list of items that are running low during the week. It will make my job a lot easier.

If there are any questions or problems, please call me at 261-1698 or E-mail me at tfk03@msn.com.

Let's have another fun season! It starts on April 26!

Tom Keller

Dates to Remember

- **April 26,2002** – League start date
- **June 10,2002** – Deadline to add players
- **June 28, 2002** – Deadline for post-season tournament entry fees.
- **August 20, 2002** – RSA General Membership Holiday Inn, Centre Place 7:00 p.m.

